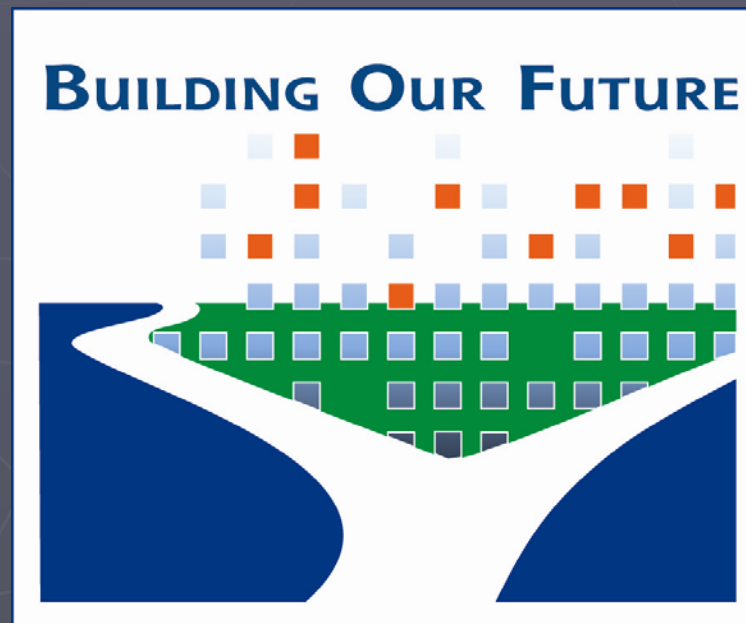
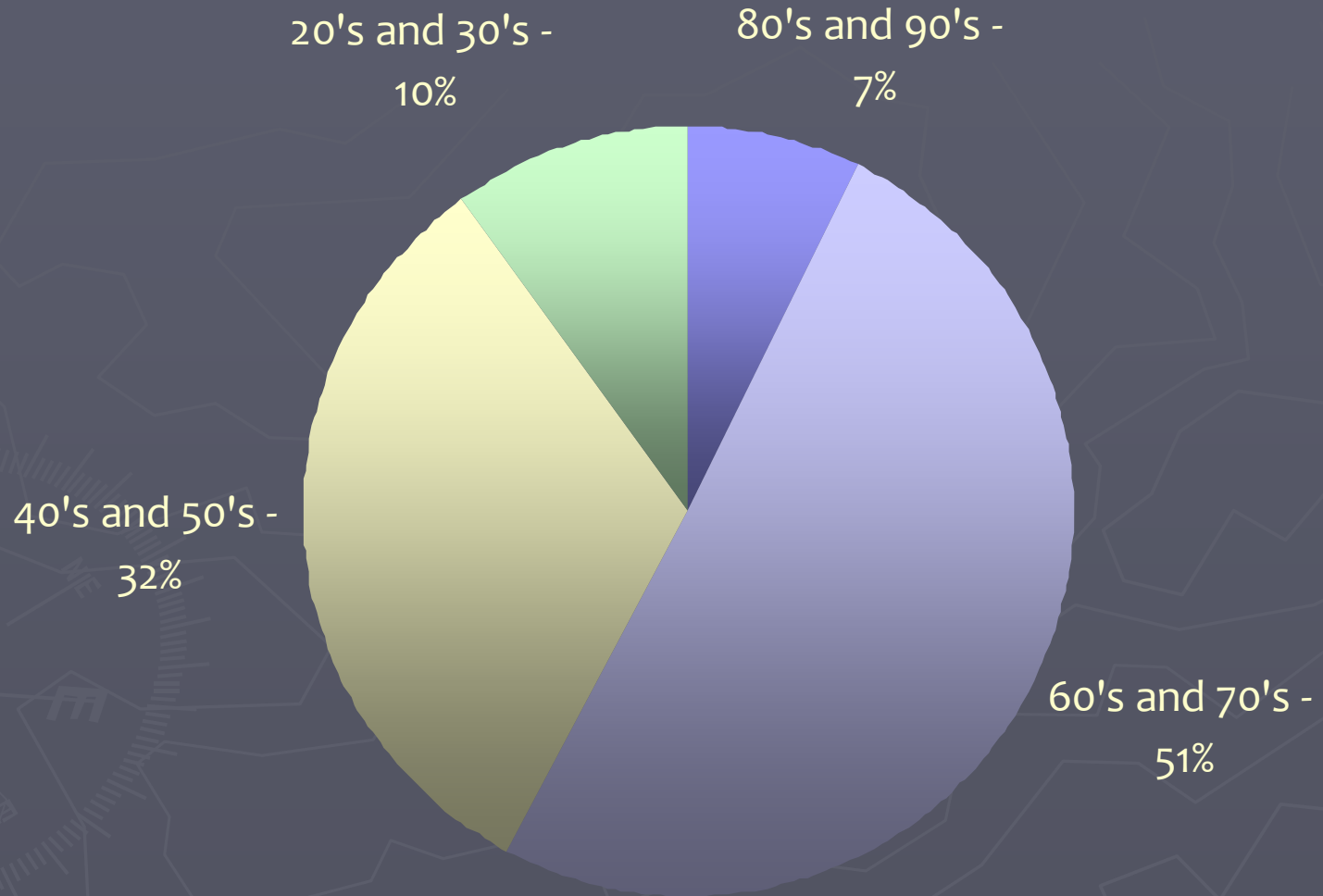


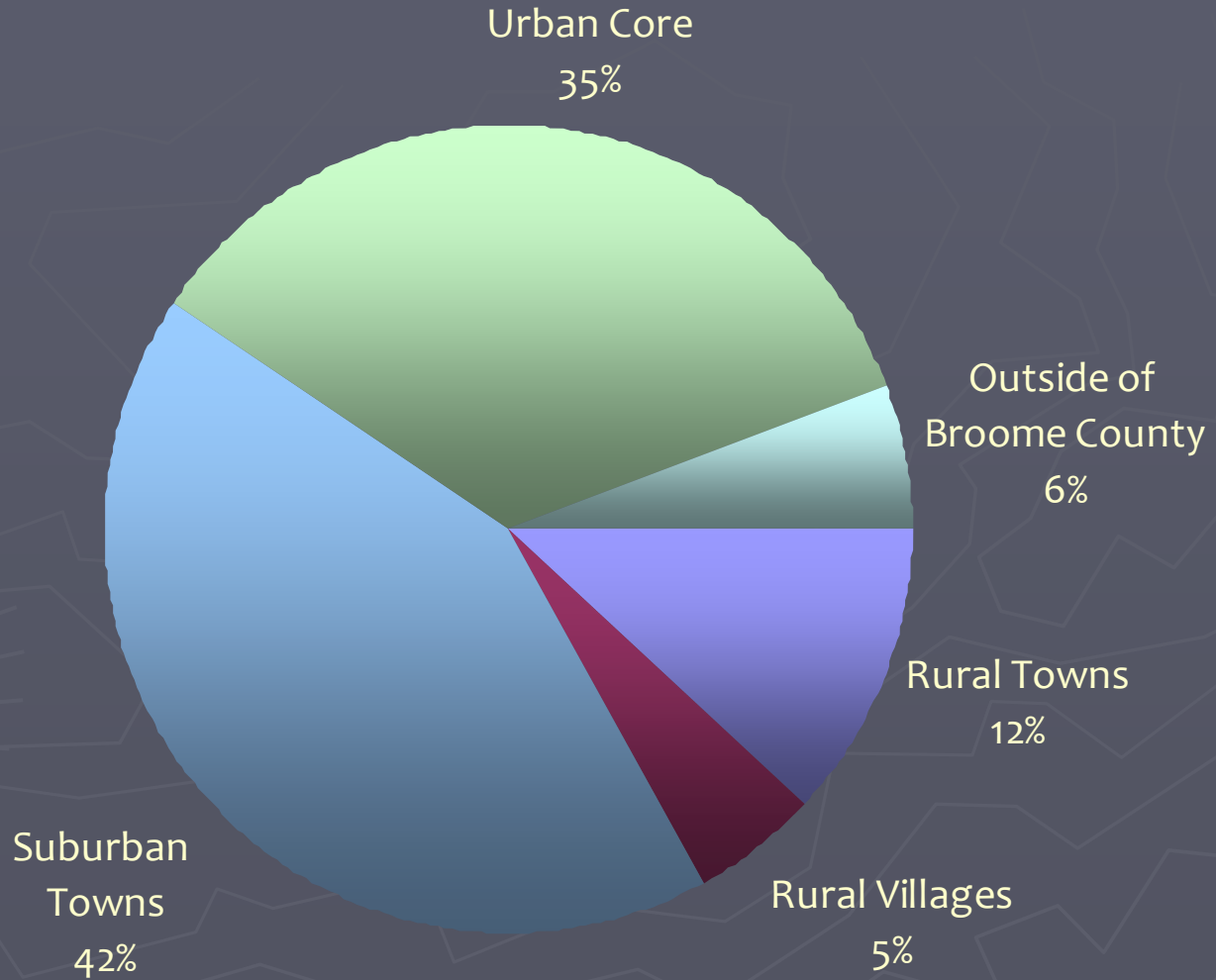
# Broome County Department of Planning and Economic Development



# Age of Respondents



# Location of Respondents



# Survey



1. Ten years from now I want Broome County to be more:

Prosperous	14%
Safe	11%
Productive	9%
Affordable	9%

# Survey



2. Ten years from now, what sectors of the Broome County economy would you like to see have the most jobs:

Research and Innovation	15%
Clean and Green Technology	13%
Manufacturing	13%
Education	13%

# Survey



## 3. How would you allocate limited resources?

Maintaining our roads, bridges, and infrastructure	17%
Providing more incentives for entrepreneurs and small business owners	13%
Protecting our environment	12%
Protecting farms and agriculture	11%

# Survey



4. There are obstacles to achieving the vision for Broome County. Please rank these obstacles to achieving our vision:

Increasing taxes	68%
Residents leaving the area	66%
Potential future flooding	52%
Too many layers of government	50%

# Survey



5. We have a wealth of opportunities here. Please rank these opportunities to help achieve our vision:

Working with local businesses to help them expand	67%
Better utilizing local colleges for economic development	65%
Recruiting firms from outside the area to locate here	62%
Encouraging people to buy local products and foods	61%



# Survey



6. Which of the following elements would you like to see more often with new development:

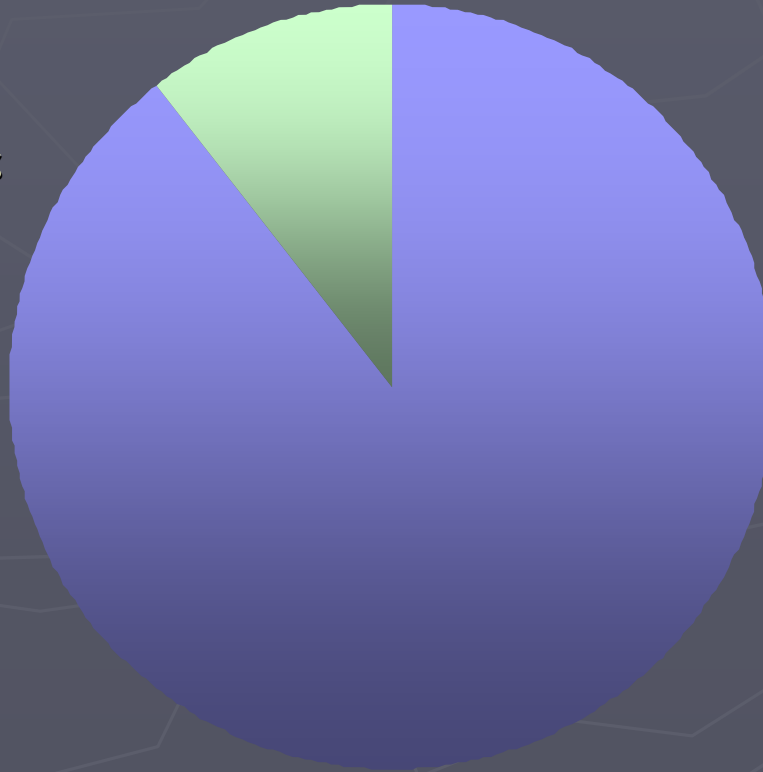
Including pedestrian and bicycle amenities such as convenient sidewalks, benches and bike racks	27%
Providing landscaping on commercial projects	22%
Using smaller building lots and reserved areas for green space on residential subdivisions	18%
Using exterior materials like stone face or wood siding instead of cinder block	14%

# Survey



## 7. Where should County decision makers encourage development:

Extend water and sewer lines and major roads to expand development outside of the Triple Cities – 11%

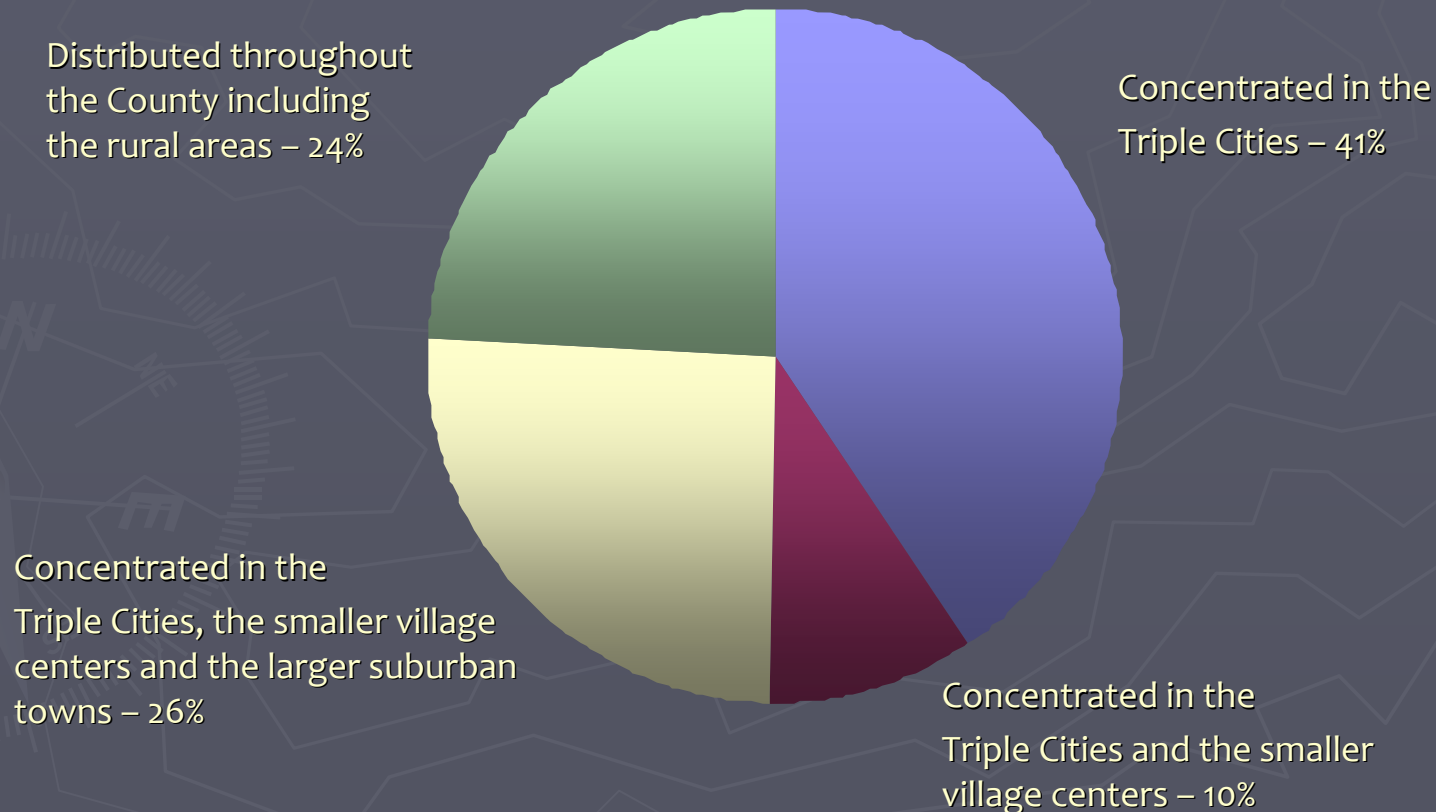


Concentrate infrastructure projects in the Triple Cities – 89%

# Survey



8. Where would you like to see the majority of new **commercial** or **industrial** development take place:



# Survey



9. Where would you like to see the majority of new **residential** development take place:

